

# North Laurel Connections Open House



Linking historic Savage Mill  
and Savage Park to the  
North Laurel Community  
Center and the Laurel MARC  
Stations

Howard County  
Office of Transportation

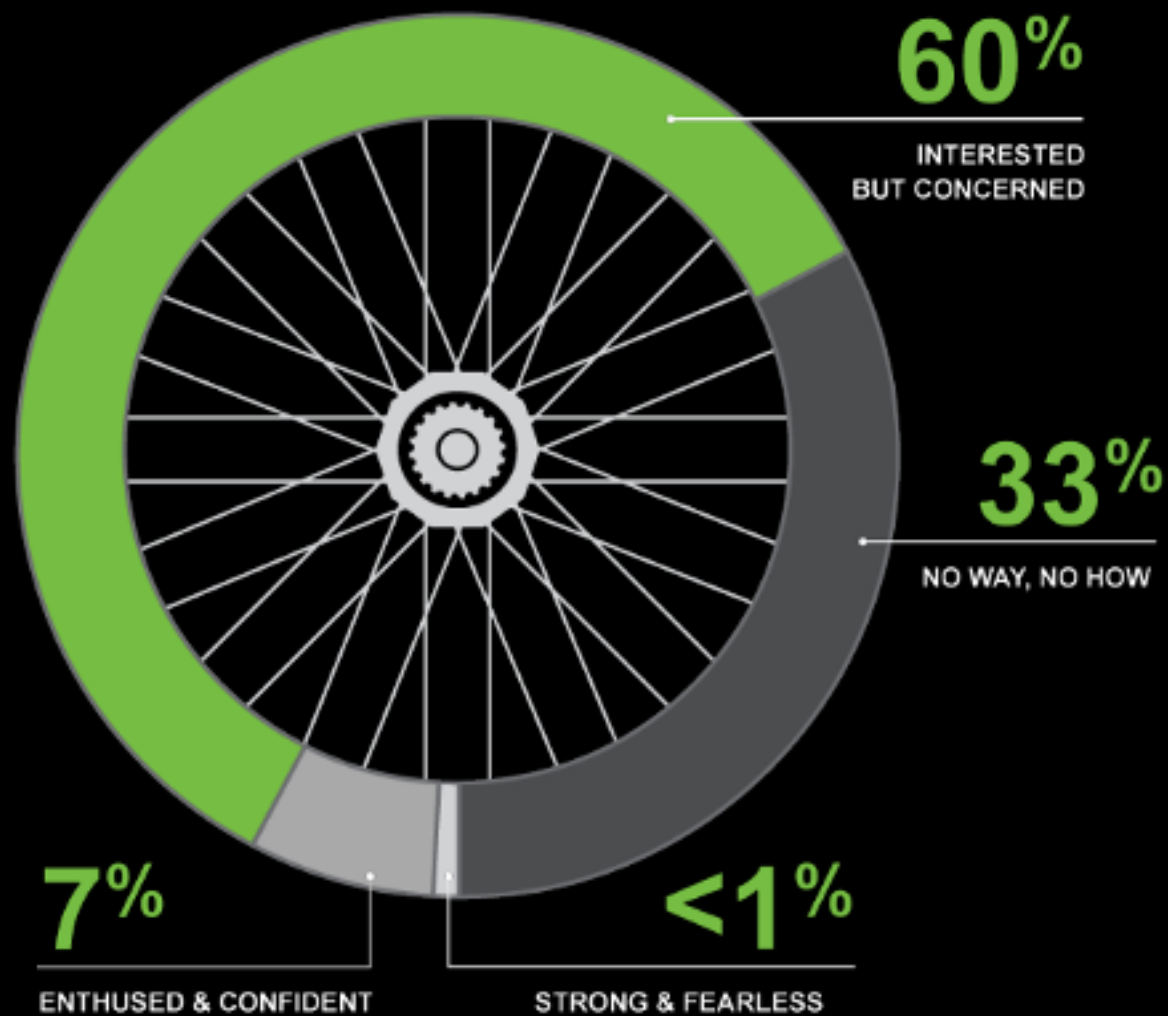


# What's Happening?

1. Welcome
2. Background/presentation
3. Hands-on Exercise



# FOUR TYPES OF RIDERS



# North Laurel Connections

MORE

Experienced and Confident

A woman who is trying get fitter by riding her bike on short recreational and shopping trips, she is comfortable on roads with painted bike lanes and small local roads.

Enthused and Confident

A mother and daughter who enjoy Saturday rides to the library along the trail that runs near their house. The need to cross a busy road prevents them from riding together to elementary school during the week.

A new resident who just rented an apartment. He used to ride to the commuter rail station to get to graduate school in Boston and continue using the train to get his new job in Downtown DC. He wants to bike to MARC to get to his new job, but there are busy roads that he wants to avoid.

LESS

Interested and Concerned





# North Laurel Connections

## Goal

Develop initial design drawings to connect destinations

Savage Park



NORTH LAUREL  
COMMUNITY CENTER

Laurel



Laurel Race Track



# North Laurel Connections

## Objective

The main objective of this project is to identify preferred **on/off road improvements** to provide needed access to local communities and a **multi modal transportation link** between North Laurel and Savage Park. The result of this planning project will **guide** the connectivity improvements, such as **short pathway connections, sharrows, bike lanes and wayfinding signage** to guide cyclists and pedestrians to connect with destinations in the south.

Pathways



Bike Lanes



Protected  
Bike Lanes



Sharrows



Wayfinding



# North Laurel Connections

## Project Schedule

### Key Tasks

### Status/Date

Grant Awarded

Complete

1<sup>st</sup> Open House

11/17/2015

2<sup>nd</sup> Open House

Jan- Feb 2016

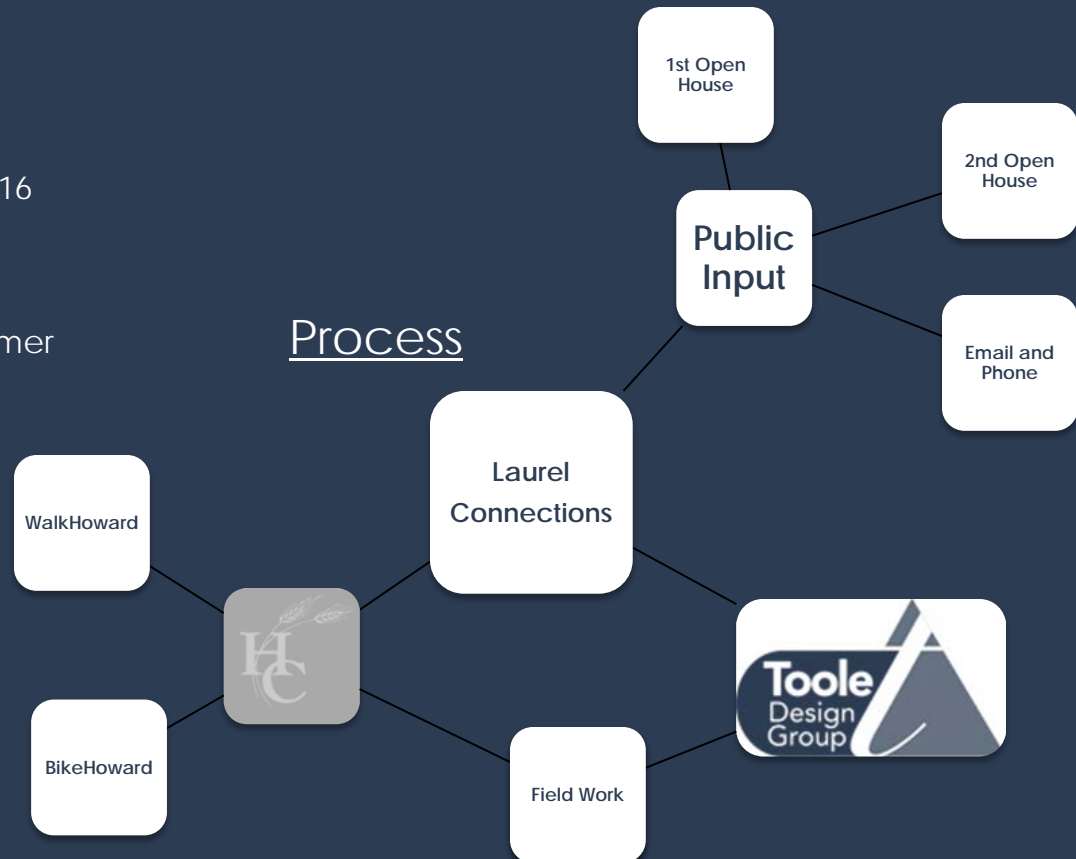
Develop 30% Design  
Plans

Spring 2016

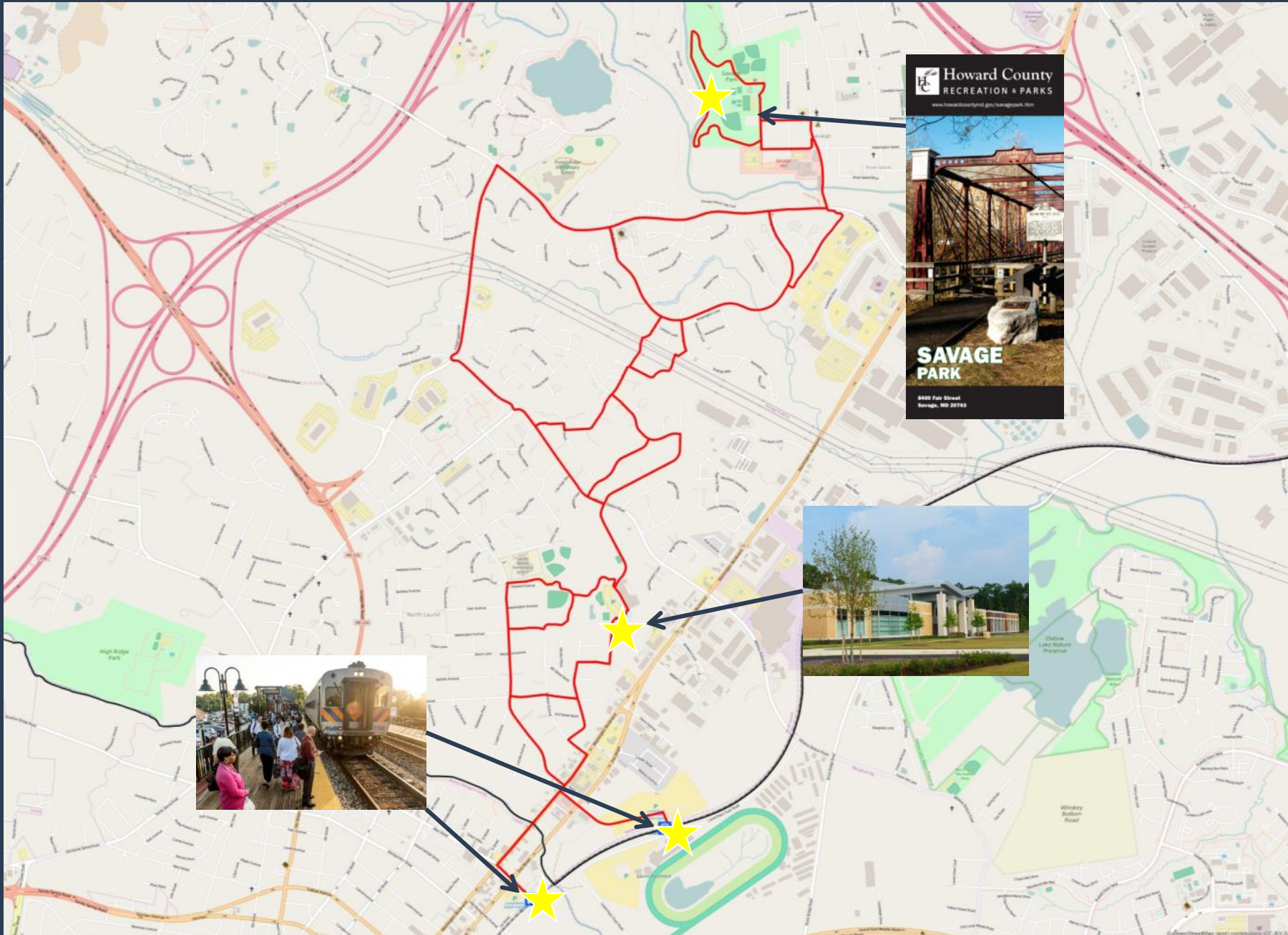
Submit final report

Spring/Summer  
2016

## Process









# Table Exercise

Which are your preferred route options?

Areas of concern?

Discuss with your group leader and mark up the maps



## North Laurel Connections



Linking Savage Park to the Laurel MARC Stations

Howard County requests your participation to help us better serve you!

We will be hosting an **open house** on future **bicycle and pedestrian** connections to link historic Savage Mill and Savage Park with the North Laurel Community Center and Laurel MARC Stations



Where

**North Laurel Community Center**  
9411 Whiskey Bottom Rd.  
Laurel, MD 20723

When

**Tues. November 17  
7:00pm to 8:00pm**

Questions? Please feel free to contact us  
Office: 410-313-3842  
Email: [dcCookson@howardcountymd.gov](mailto:dcCookson@howardcountymd.gov)  
Website: <http://bikehoward.com/north-laurel-connections/>

**BIKE HOWARD**

**WALKHOWARD**  
moving forward

Office of Transportation 

### JOIN US FOR AN OPEN HOUSE



# Hands-On Exercise

## Group Leaders

Allison



Brian



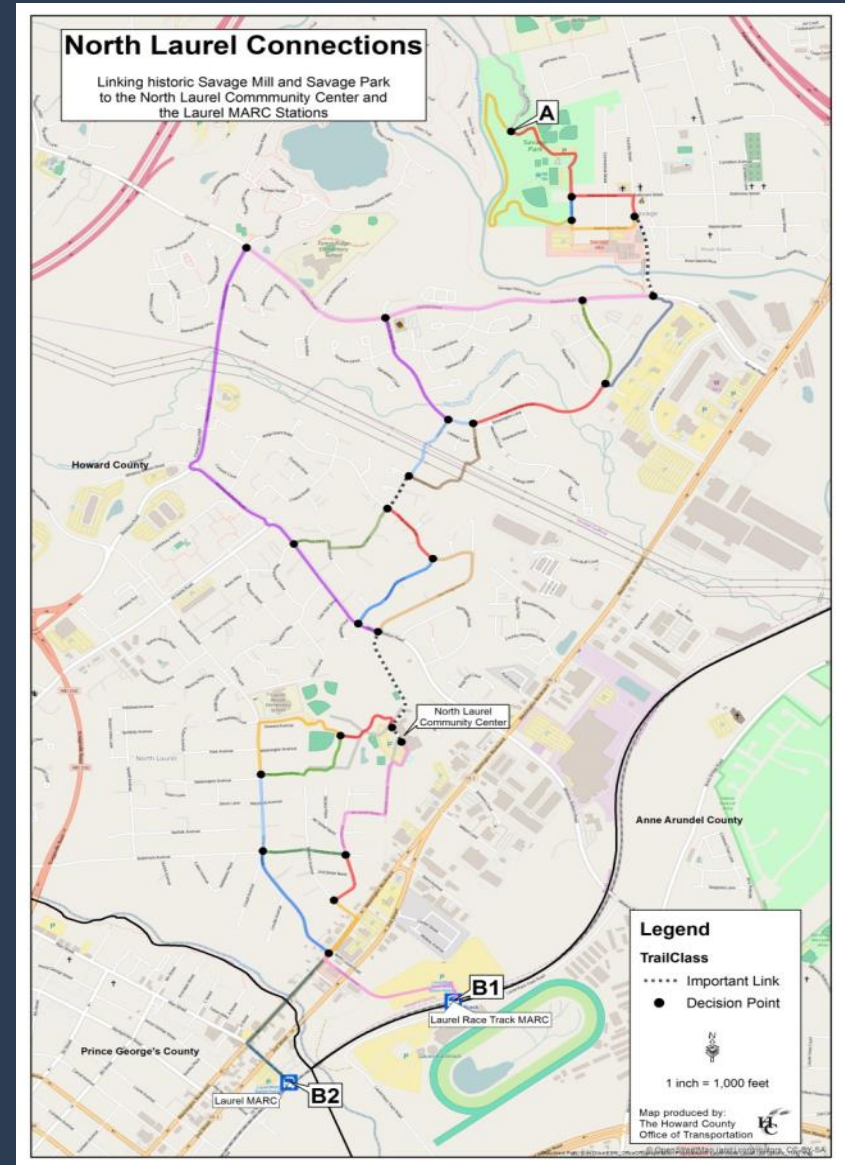
David



Chris



Jefferson





## BIKE HOWARD

The Howard County Bicycle Master Plan



HOME PROPOSED BICYCLE NETWORK MATERIALS & RESOURCES PROJECTS

### Welcome!

Howard County is developing its first Bicycle Transportation Master Plan. The Office of Transportation is the lead agency administering the planning process. To ensure a comprehensive look at bicycling, the Office has secured the involvement of a number of other county agencies including the Office of the County Executive, the County Council and Department of Public Works.



The master plan will address bicycling for both transportation and recreation; and will look at on-road and off-road bicycling facilities variety of methods were used to gather public input, including a series of public workshops the Fall of 2012, an online survey, and availability of an interactive online map.

#### BICYCLE MASTER PLAN GOALS & OBJECTIVES

- Identify and develop countywide system of bicycle facilities to foster connectivity within a between the following: villages, communities and neighborhoods throughout the County, as well as neighboring cities and counties, parks and recreation centers, schools and educational institutions, commercial and employment centers, and regional and local transit facilities.
- Facilitate recreational and transportation trips by bicycle in the County and improve safety for all types of bicyclists.
- Recommend County policies that will support bicycling, including bikeway facility design.
- Build public support for implementation of the Plan.

A draft version of Bike Howard is presented below. You can view the Plan on-line, print it or download it. You can magnify and zoom in on the detail in the maps and the Plan by using your mouse wheel with the PDF menus View/Zoom and then Dynamic Zoom.

Please send any comments to David Cookson, at [dcCookson@howardcountymd.gov](mailto:dcCookson@howardcountymd.gov) or Howard County Government, Office of Transportation, 3430 Courthouse Dr, Ellicott City, MD 21043.

[Bike Howard Facility Recommendations Electronic Map](#)

[Bike Howard Executive Summary-Draft](#)

[Bike Howard-Draft November 2015](#)

[Bike Howard Short Term Bike Facility Type-DRAFT-MAP](#)

[Bike Howard Countywide Bikeway Networks-DRAFT-MAP](#)

[Bike Howard Appendices DRAFT](#)

Share this:



One blogger likes this.

## BIKE

The H



HOME PROPOSED BICYCLE NETWORK

### Projects

This page contains information about the following projects in Howard County.

[Patuxent Branch Trail Extension](#)

[Howard County Bikeshare](#)

[Cedar Lane Shared Use Path](#)

[North Laurel Connections](#)

[Dobbin Road Shared Use Path](#)

[Surface Upgrade for Existing](#)

Share this:



Be the first to like this.

## BIKE HOWARD

The Howard County Bicycle Master Plan



HOME PROPOSED BICYCLE NETWORK MATERIALS & RESOURCES PROJECTS GREEN T

### North Laurel Connections



Location

Linking Savage Park to the Laurel MARC Stations

Status

We will be hosting an **open house** on future **bicycle and pedestrian** connections to link historic Savage Mill and Savage Park with the North Laurel Community Center and Laurel MARC Stations

Where

**North Laurel Community Center**  
9411 Whiskey Bottom Rd.  
Laurel, MD 20723

When

Tues. November 17  
7:00pm to 8:00pm

About the Project

Project Goals

The goal of this project is to develop 30% design documents for a series of on/off road facilities to improve connections from the **Patuxent Branch Trail** trailhead at **Savage Park** to the **North Laurel Community Center** continuing to the **Laurel Race Track MARC Station** and the **Laurel MARC Station**; potentially including a shared use pathway to improve access and connections across an existing utility right of way.

#### PROJECT TEAM

County Staff:

Chris Eatough  
Bicycle and Pedestrian Coordinator  
Email: [ceatough@howardcountymd.gov](mailto:ceatough@howardcountymd.gov)  
David Cookson  
Planning Specialist  
Email: [dcCookson@howardcountymd.gov](mailto:dcCookson@howardcountymd.gov)  
Howard County Office of Transportation  
3430 Court House Drive  
Ellicott City, MD 21043  
Phone: (410) 313-3842

#### STAY INFORMED

Enter your email address to follow this blog and receive notifications of new posts by email.

Join 180 other followers

Enter your email address

Follow





# Questions?



# Contact Information

## Office of Transportation

### Address

3430 Court House Drive  
Ellicott City, MD 21043

### Contact

Phone: 410-313-3130  
Fax: 410-313-1655

### Office Hours

Monday – Friday  
8:00am to 5:00pm

## Project Staff

### Chris Eatough

Bicycle and Pedestrian Coordinator

Phone: 410-313-0567

Email: [Ceatough@howardcountymd.gov](mailto:Ceatough@howardcountymd.gov)

### David Cookson

Transportation Planner

Phone: 410-313-3842

Email: [Dcookson@howardcountymd.gov](mailto:Dcookson@howardcountymd.gov)

### Jefferson Miller

Planning Specialist

Phone: 410-313-4361

Email: [Jpmiller@howardcountymd.gov](mailto:Jpmiller@howardcountymd.gov)

