

HOWARD COUNTY BIKESHARE PILOT PROGRAM



Convenient, healthy, and fun!

1. Pick up a bike at any station
2. Ride to your destination
3. Dock the bike at any station

Bikeshare is coming to Columbia in 2017!

See map of stations on reverse.

www.HowardCountyBikeshare.com for more information

Bikeshare is an innovative transportation program providing public bicycles at self-serve bikeshare stations located throughout a community.

Community Supporters



HOWARD COUNTY
GENERAL HOSPITAL
JOHNS HOPKINS MEDICINE



Howard Hughes
THE HOWARD HUGHES CORPORATION



THE MALL
IN COLUMBIA
EGP

Examples of Bikeshare Systems in the United States



Baltimore Bikeshare, Baltimore, MD



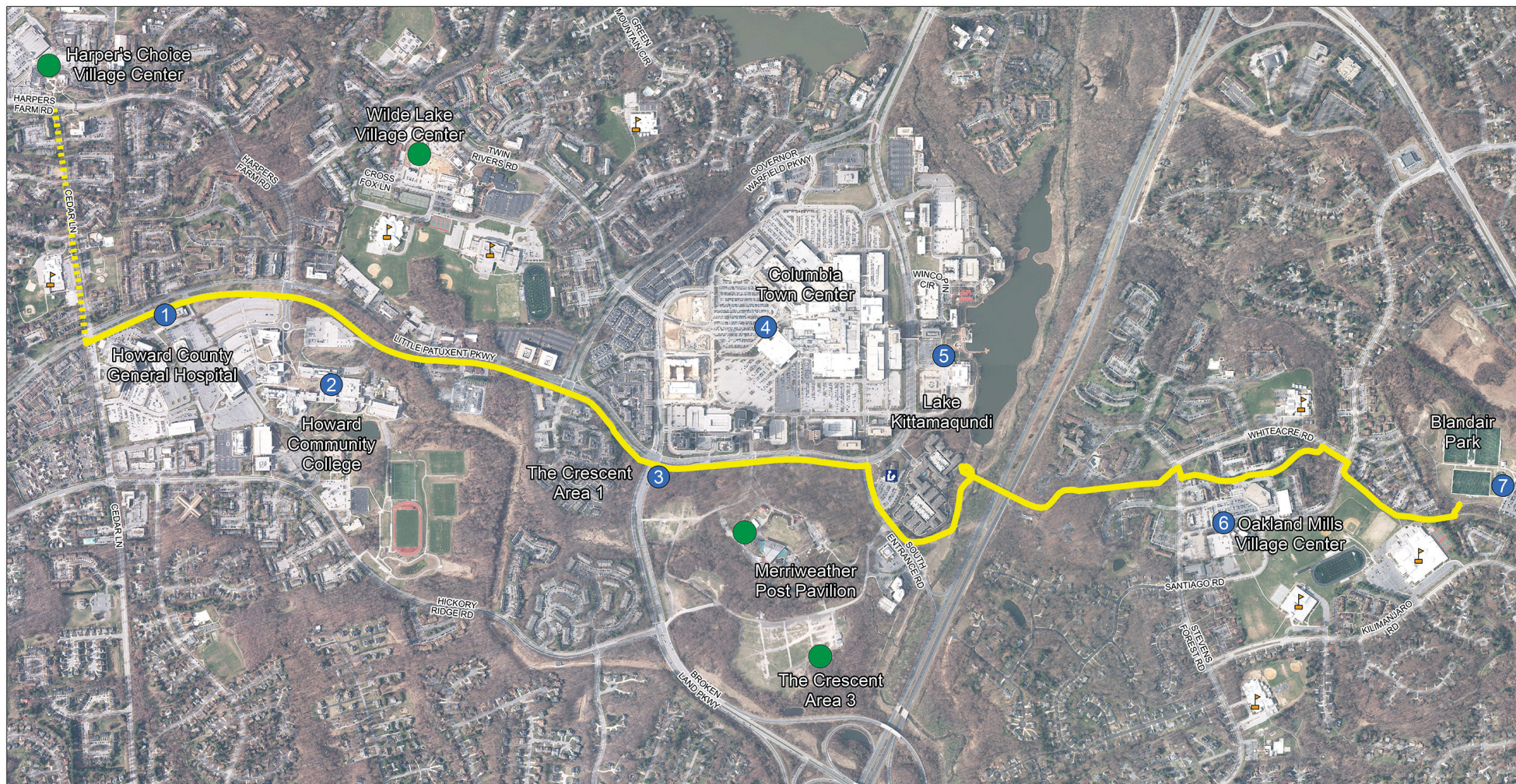
Capital Bikeshare, Washington D.C. region



Citibike, New York City



Breeze Bikeshare, Santa Monica, CA

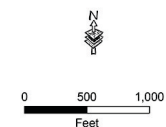


Howard County BIKESHARE Pilot Program

Legend

- Potential Future Station Location
- Future Station Locations
- Downtown Columbia Trail
- 📖 Library
- 🏫 School
- Future Cedar Lane Pathway

Updated: January 2017



Map produced by:
The Howard County
Office of Transportation

