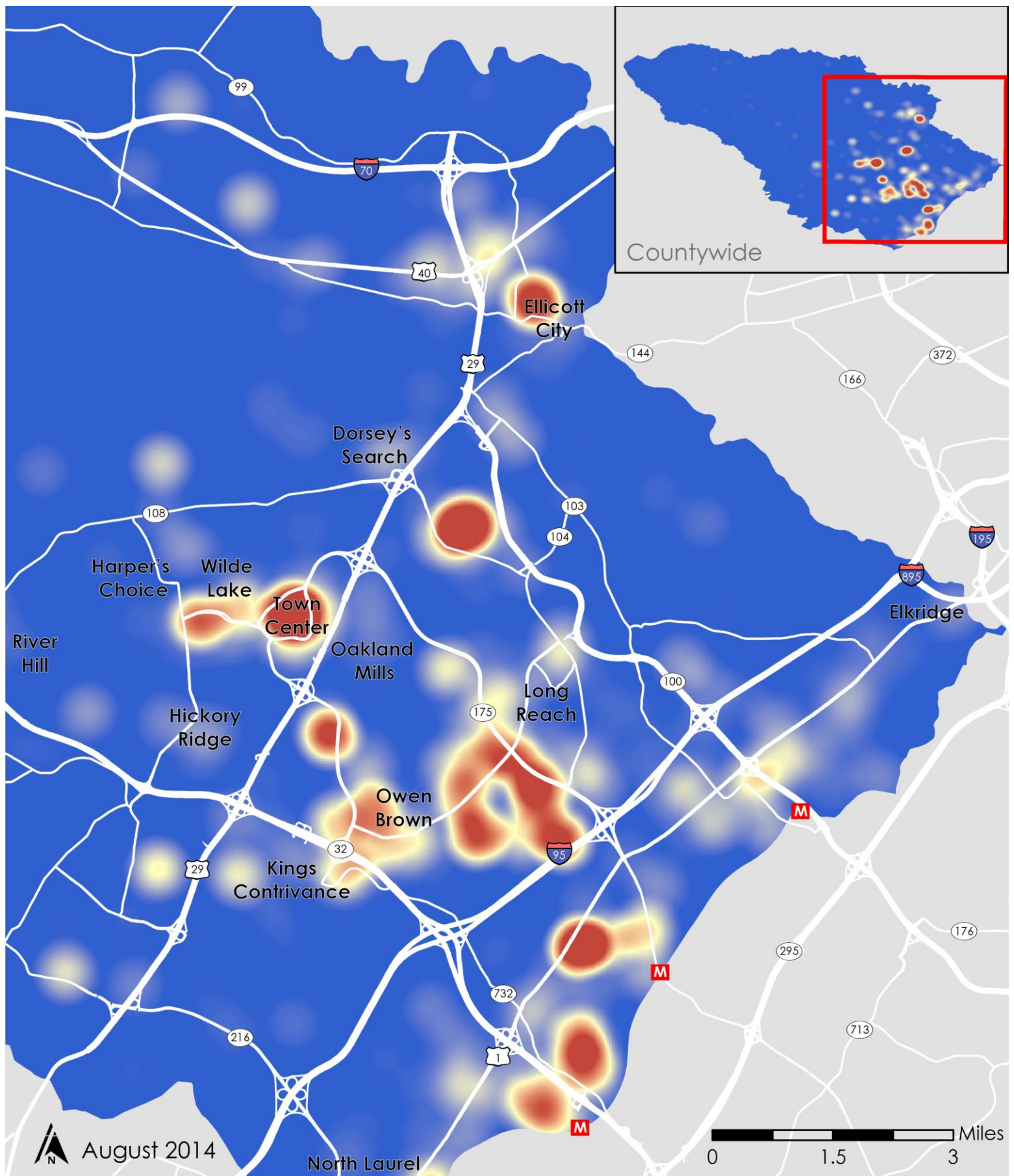


APPENDIX 5 – INDIVIDUAL VARIABLE MAPS



Employment Density

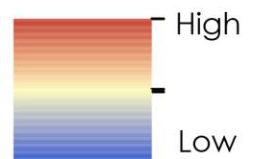
BIKE HOWARD

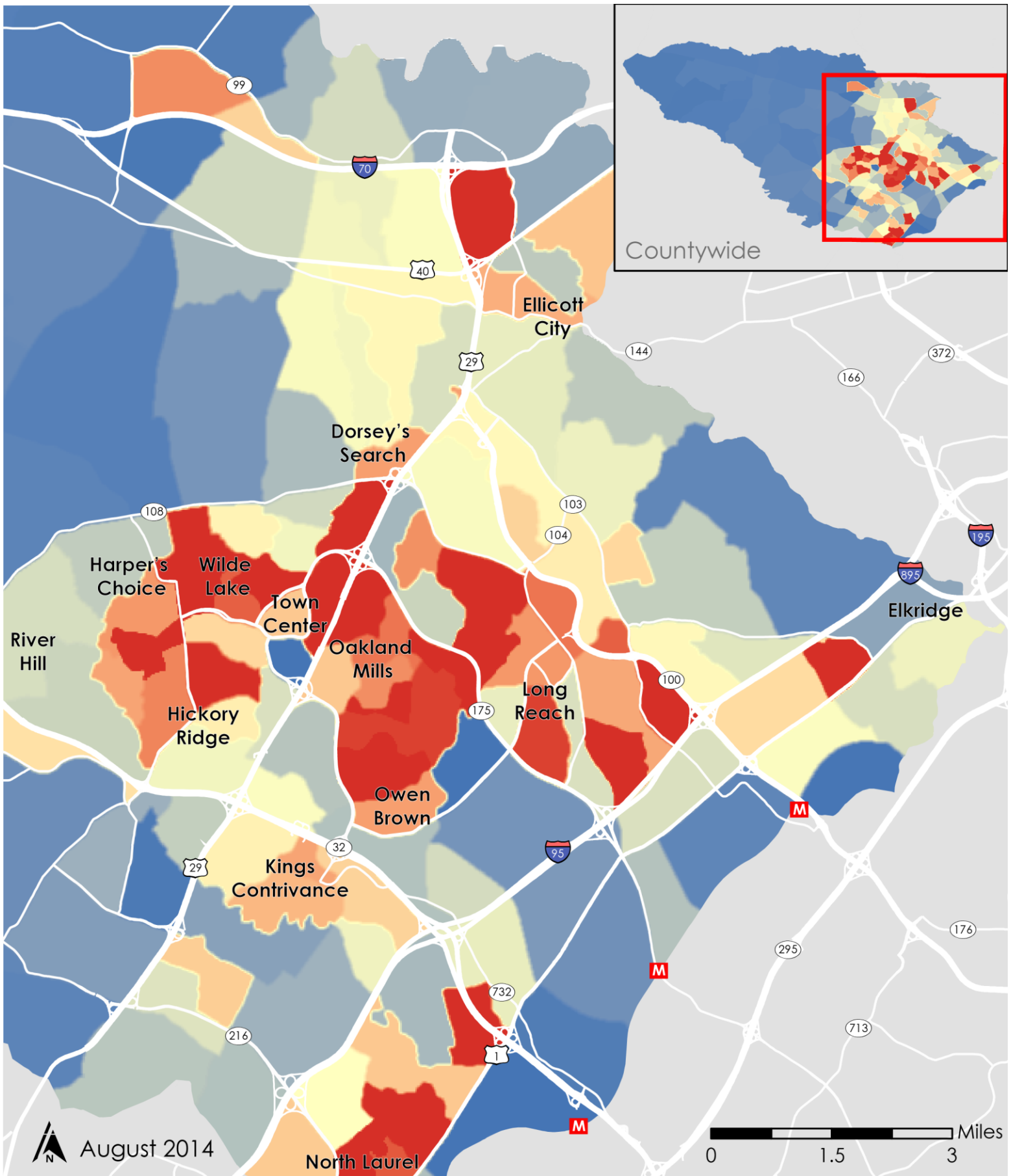
Bike Share Feasibility Study



M MARC train

Source: US Census Bureau. Longitudinal Employer-Household Dynamics. Area Profile Analysis in 2011 by Primary Jobs





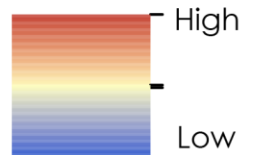
Population Density

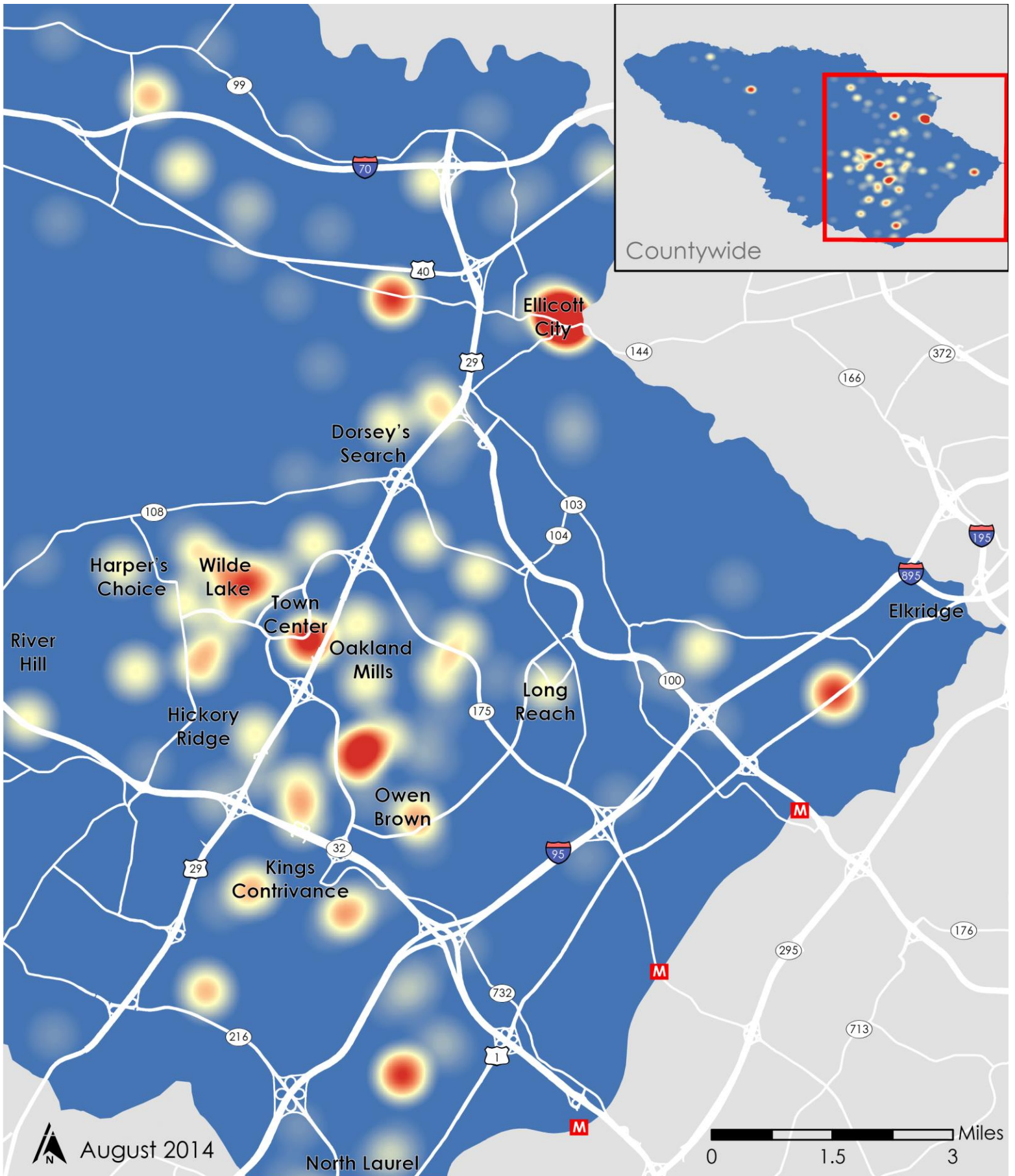
BIKE HOWARD

Bike Share Feasibility Study 

Source: 2008-2012 American Community Survey 5-Year Estimates.
File S0101 Age and Sex. U.S. Census Bureau.

 MARC train





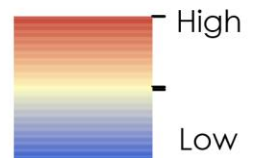
Destinations BIKE HOWARD

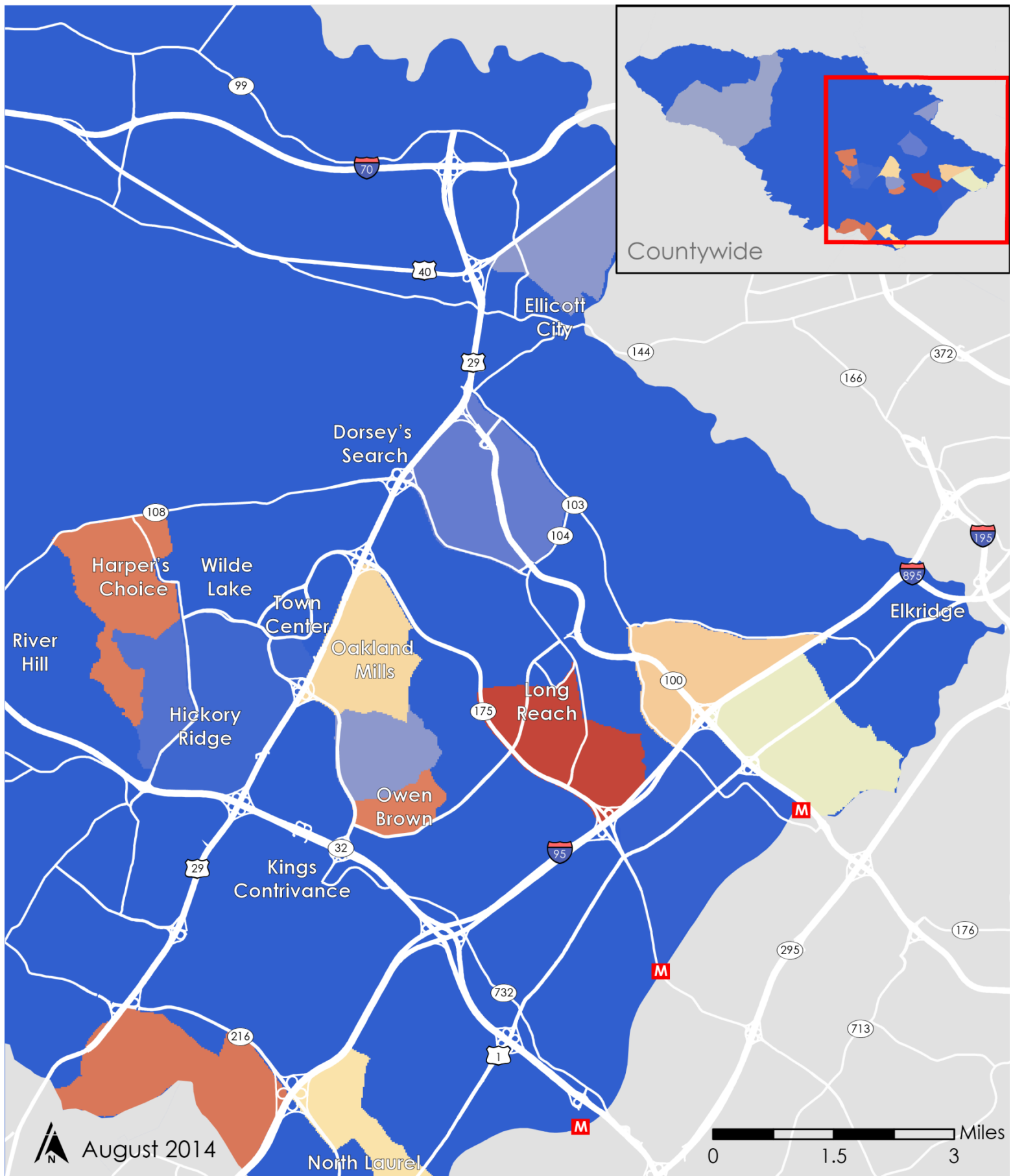
Bike Share Feasibility Study



M MARC train

Source: Howard County DPZ Staff. File: Core Places





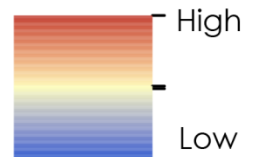
Bicycle Modeshare

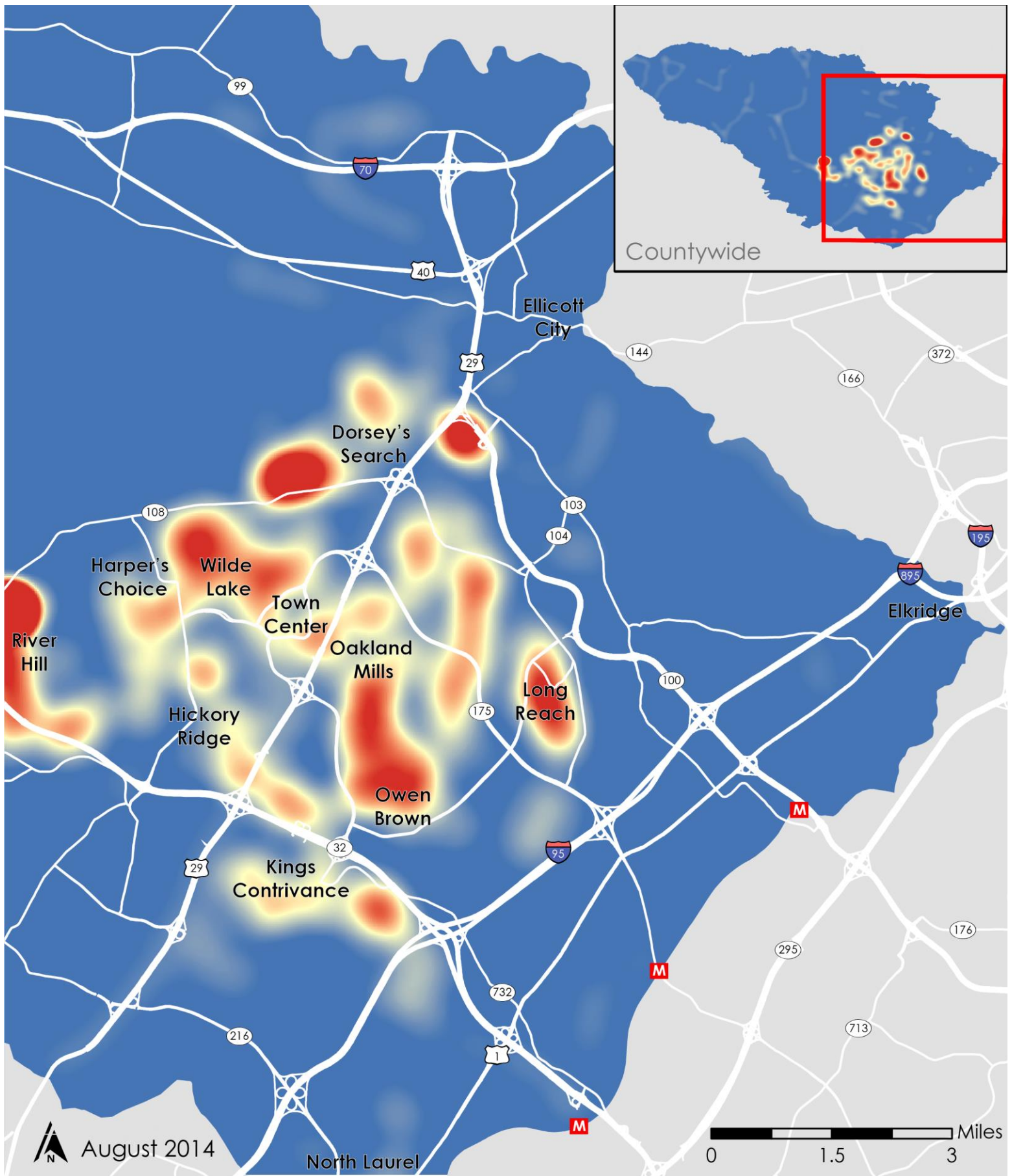
BIKE HOWARD

Bike Share Feasibility Study  

Source: 2006-2010 American Community Survey 5-Year Estimates. File B08101
Means of Transportation to work by age. U.S. Census Bureau and 2010
Transportation Analysis Zones provided by Howard County DPZ Staff.

 MARC train





Proximity to Existing Bicycle Infrastructure

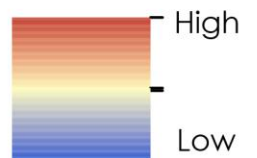
BIKE HOWARD

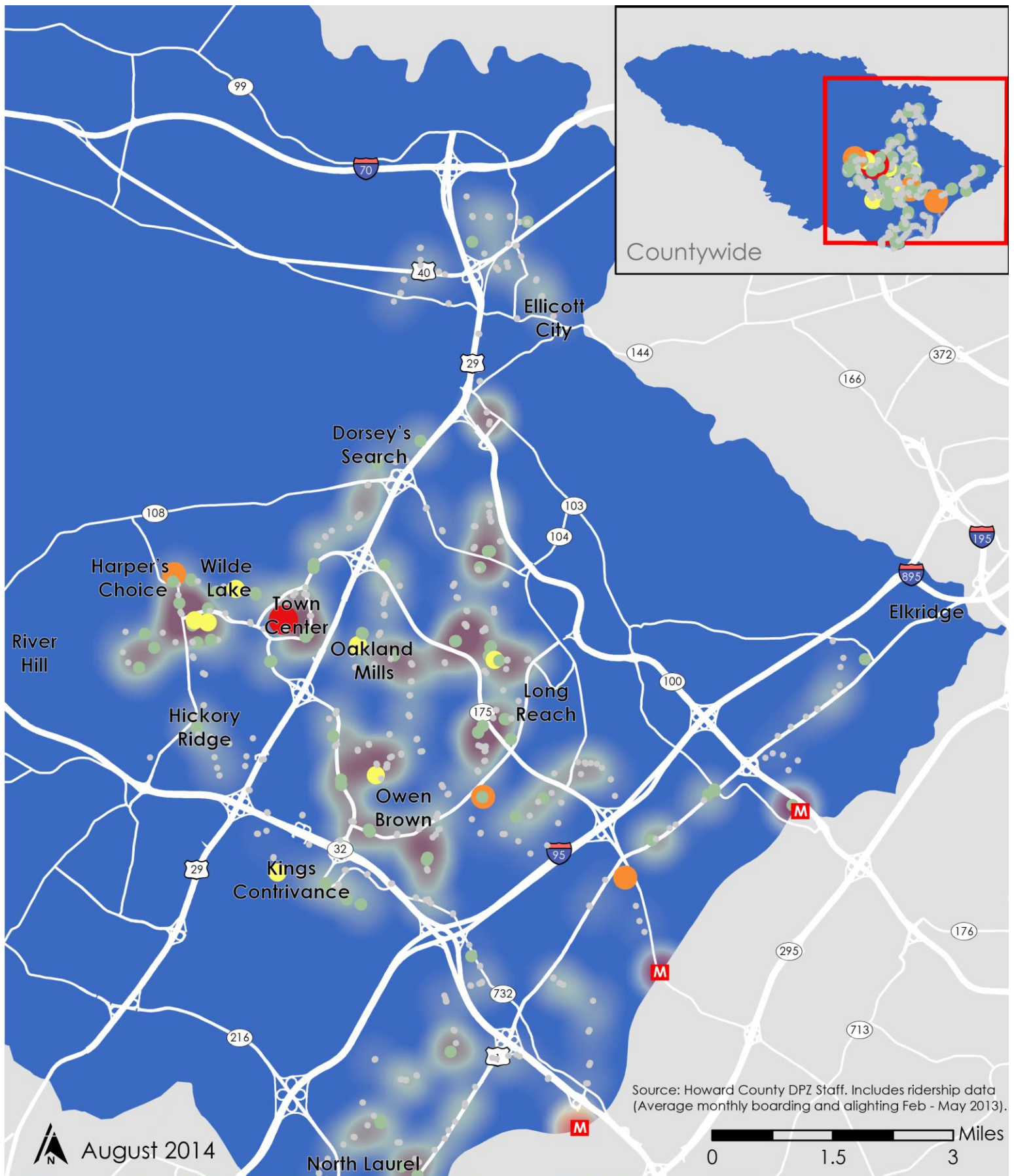
Bike Share Feasibility Study



M MARC train

Source: Howard County Bicycle Master Plan and
Howard County DPZ Staff





Proximity to Transit vs Ridership

BIKE HOWARD

Bike Share Feasibility Study



Bus Boarding and Alighting

0 - 1,122

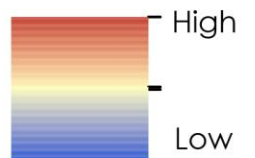
1,123 - 4,506

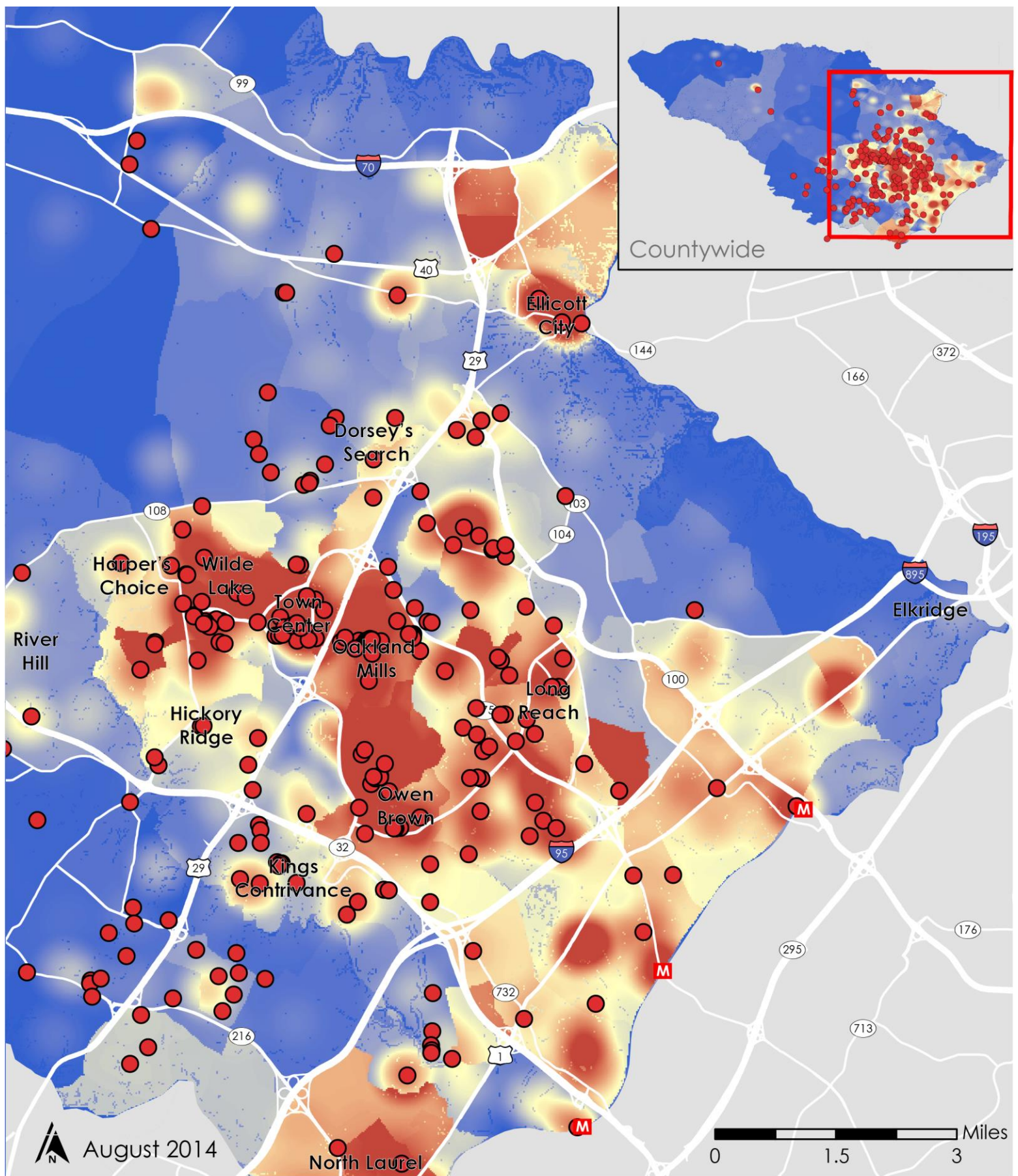
4,507 - 11,298

11,299 - 27,728

27,729 - 21,3012

MARC train





Publicly Suggested Locations

BIKE HOWARD

Bike Share Feasibility Study



M MARC train

● Public Suggestions

Source: Publicly suggested station locations
via www.howardcountybikeshare.com

